

Green Line BDURP Construction Outlook

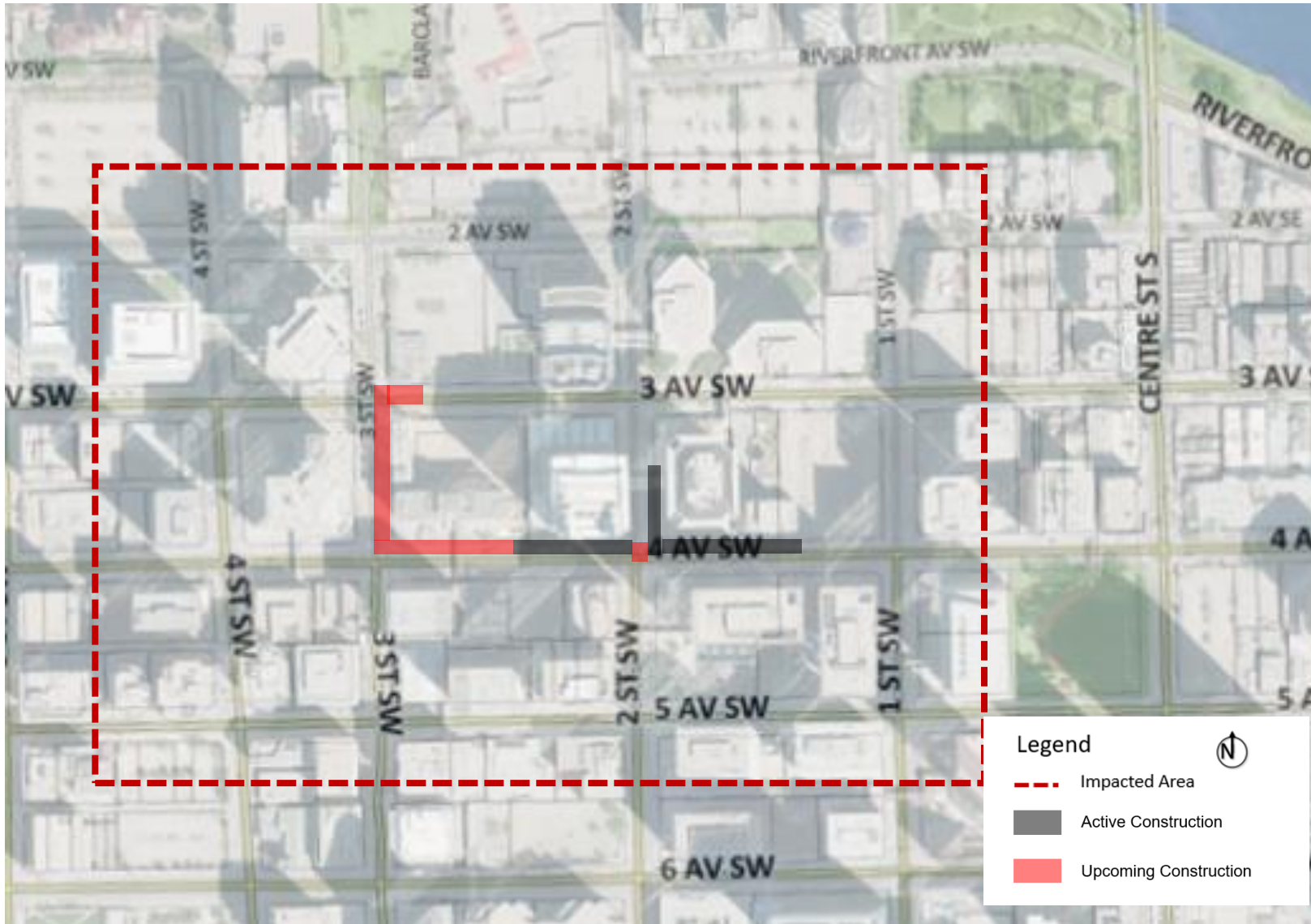
February 16, 2023



Active and Upcoming Construction



- ① TELUS Duct Bank
- ② TELUS Vault
- ③ ENMAX Duct Bank & Manholes
- ④ ENMAX Vault
- ⑤ ENMAX Duct Bank
- ⑥ ENMAX Manhole
- ⑦ ENMAX Duct Bank
- ⑧ ENMAX Utility Relocation
- ⑨ ENMAX Duct Bank
- ⑩ ENMAX Utility Relocation
- ⑪ TELUS Utility Relocation



1. TELUS Duct Bank

Station Area: 2 Avenue

Location: 4 Avenue S.W. from 1 Street S.W. to 3 Street S.W. and 3 Street S.W. to 3 Avenue S.W.

One lane of 2 Street closed with two-way traffic

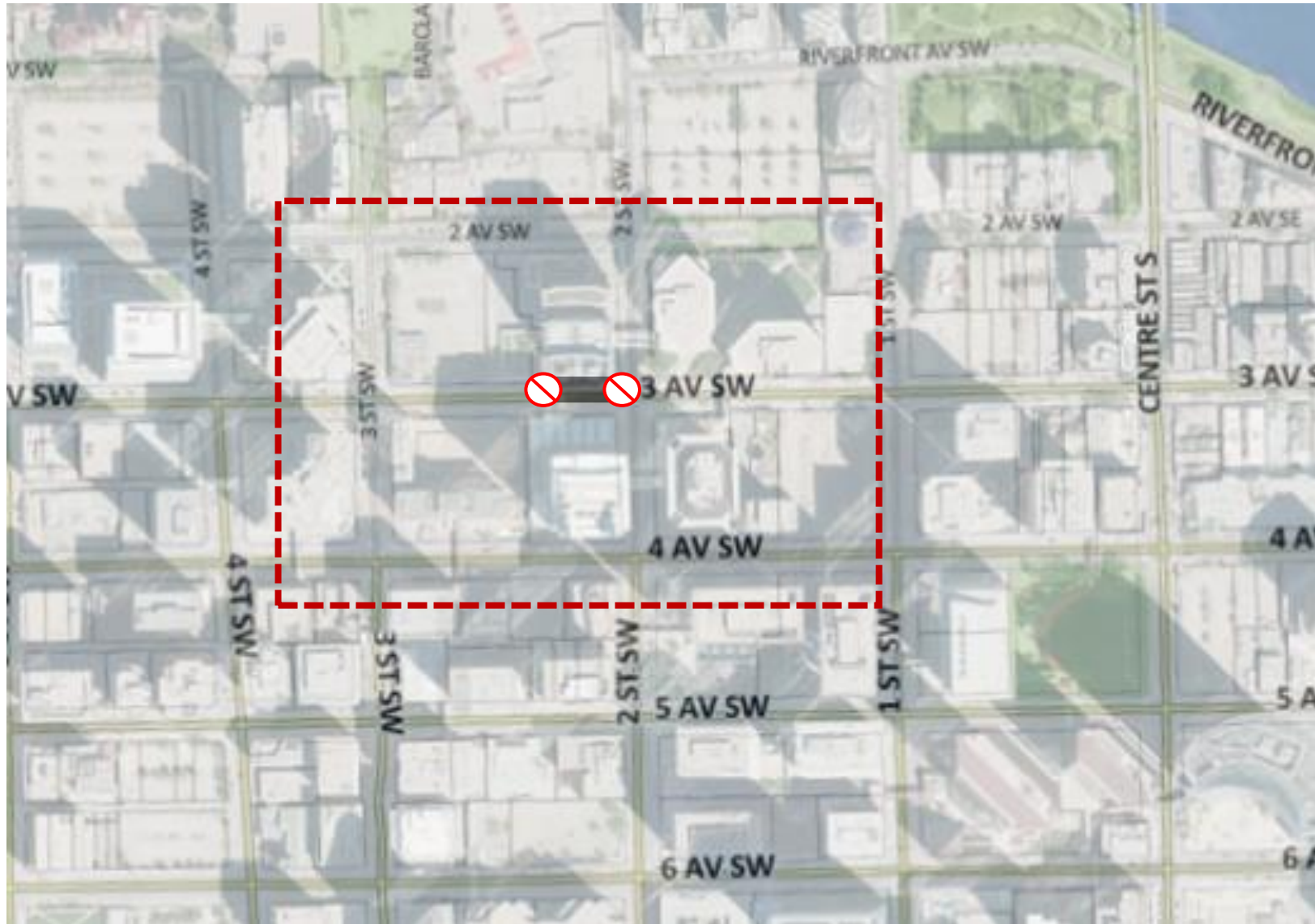
Full block closure on 3 Street starting March 17 (3 weeks)

Each phase takes approximately 3-5 weeks

Status: Ongoing

Start: November 8

Completion: Early April



2. TELUS Vault

Station Area: 2 Avenue

Location: 3 Avenue closed at 2 Street S.W. intersection

Local traffic only with flaggers in place for parkade ingress/egress during peak hours


Status: Ongoing


Start: November 23


Completion: End of February


Legend



 Impacted Area

 Active Construction

 Upcoming Construction

 Road Closure

3. ENMAX Duct Bank & Manholes

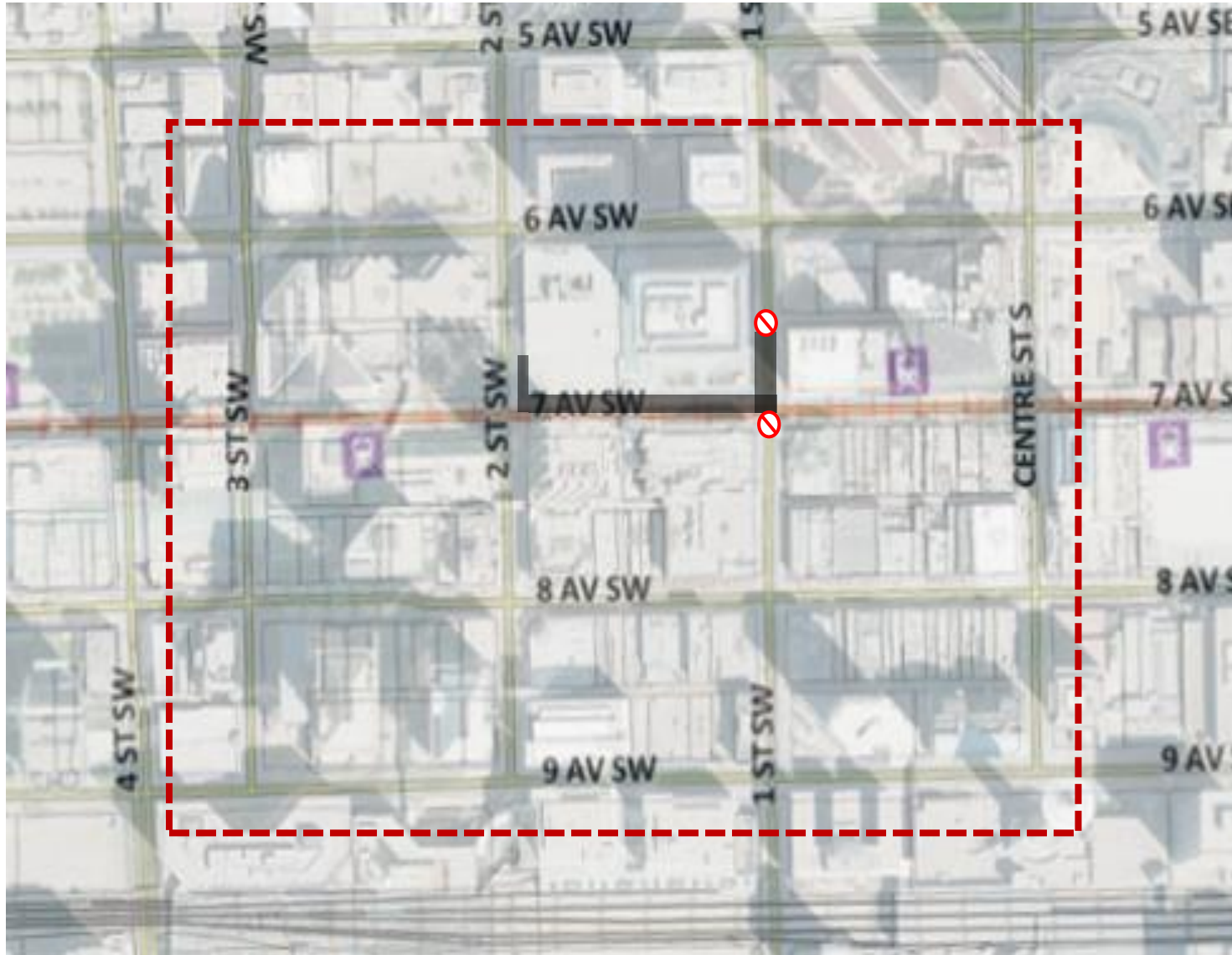
Station Area: 7 Avenue

Location: 7 Avenue and 1 Street S.W.
Pedestrian impacts with sidewalk closures on north side of 7 Avenue.
One southbound lane open for east lane access

Status: Ongoing





Start: October 24

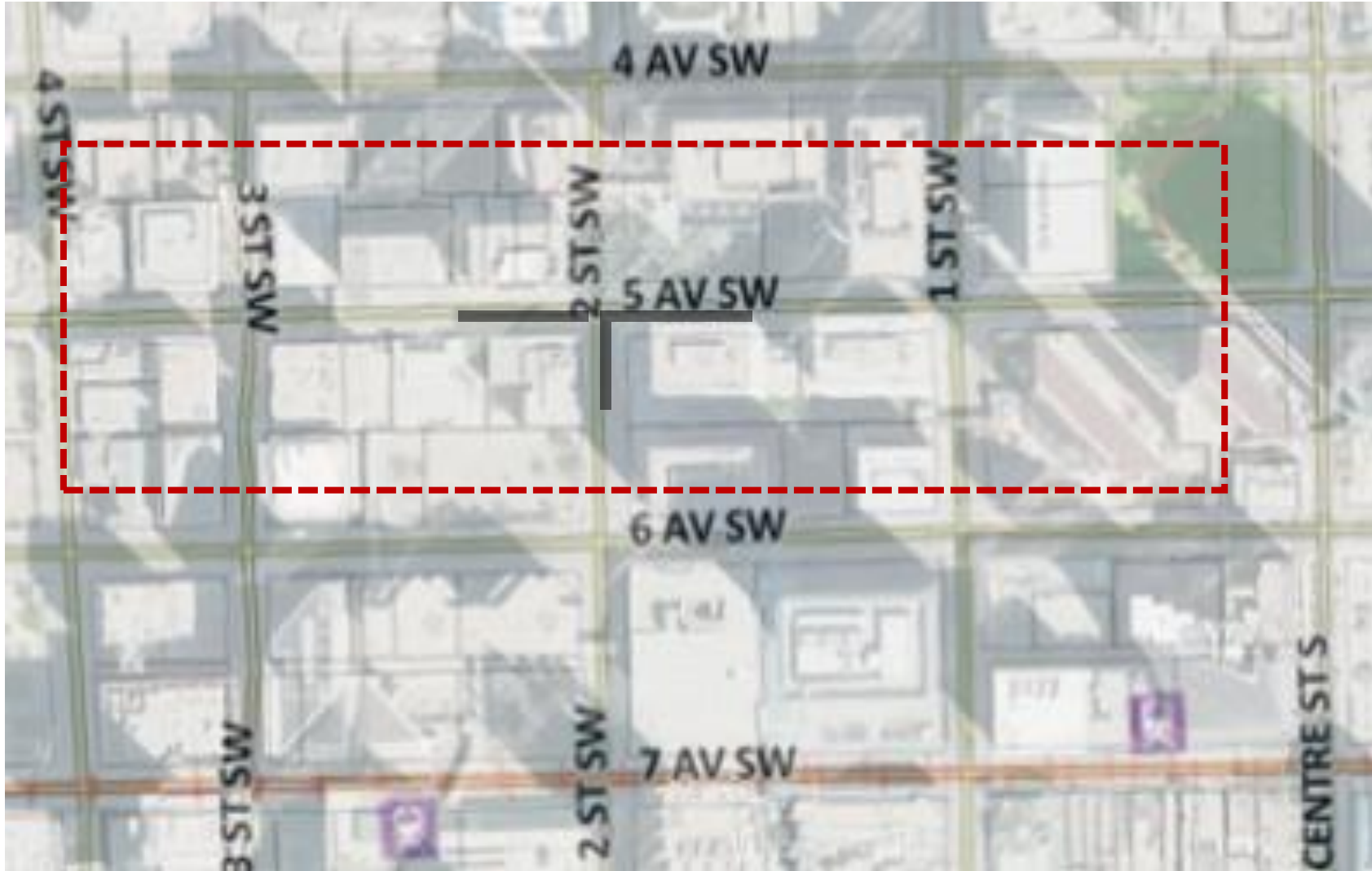
Completion: End of March



Legend



-  Impacted Area
-  Active Construction
-  Upcoming Construction
-  Road Closure



4. ENMAX Vault

Station Area: 7 Avenue

Location: 5 Avenue either side of 2 Street S.W. Closure of up to two southern lanes of 5 Avenue, plus tapering for one block in each direction.

Closure of southern sidewalk until project completion.


Status: Upcoming

Start: January 6, 2023

Completion: May 2023

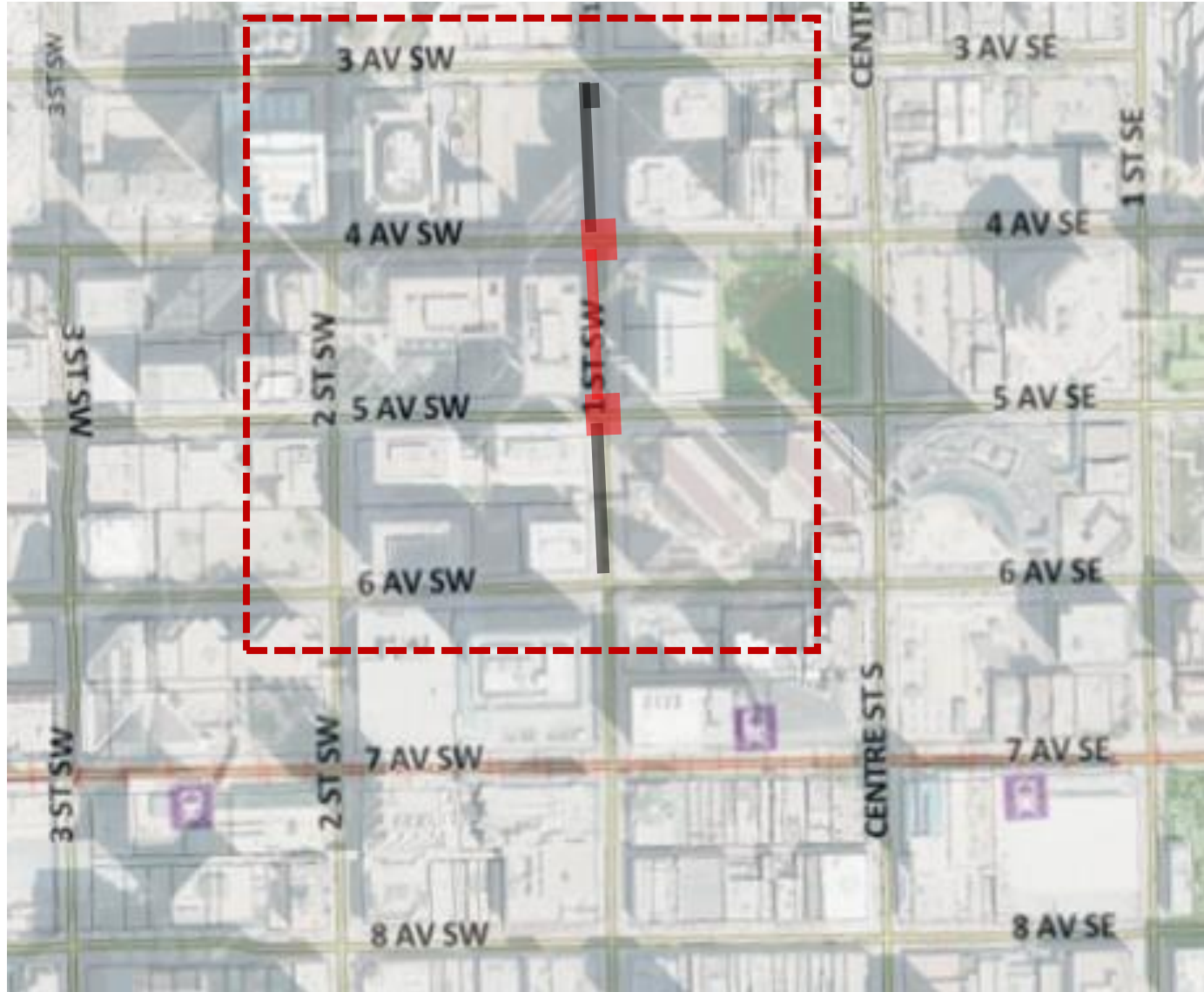
Legend



 Impacted Area

 Active Construction

 Upcoming Construction



ENMAX Duct Banks & Manholes

Station Area: 7 Avenue

Location: 1 Street S.W. between 3 Avenue and 7 Avenue.

Work will be phased, installing underground electrical infrastructure and associated vaults.




Lane closures and pedestrian impacts

Status: Upcoming

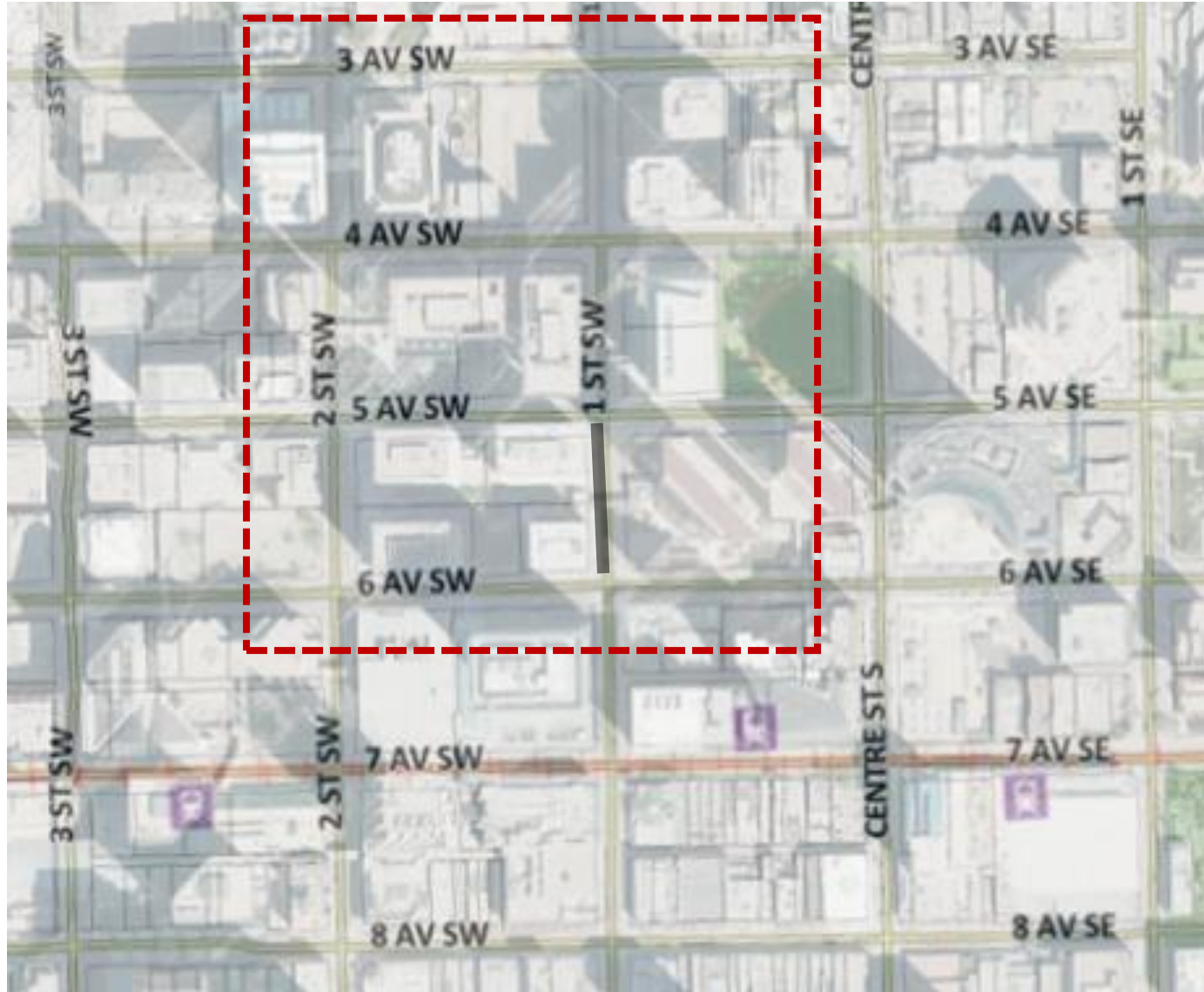
Start: January 2023

Completion: Mid-Late April

Legend

-  Impacted Area
-  Active Construction
-  Upcoming Construction





5. ENMAX Duct Bank

Station Area: 7 Avenue

Location: 1 Street S.W. between 5 Avenue and 6 Avenue.

Duct bank installation
1 lane open




Lane closures and pedestrian impacts

Status: Active

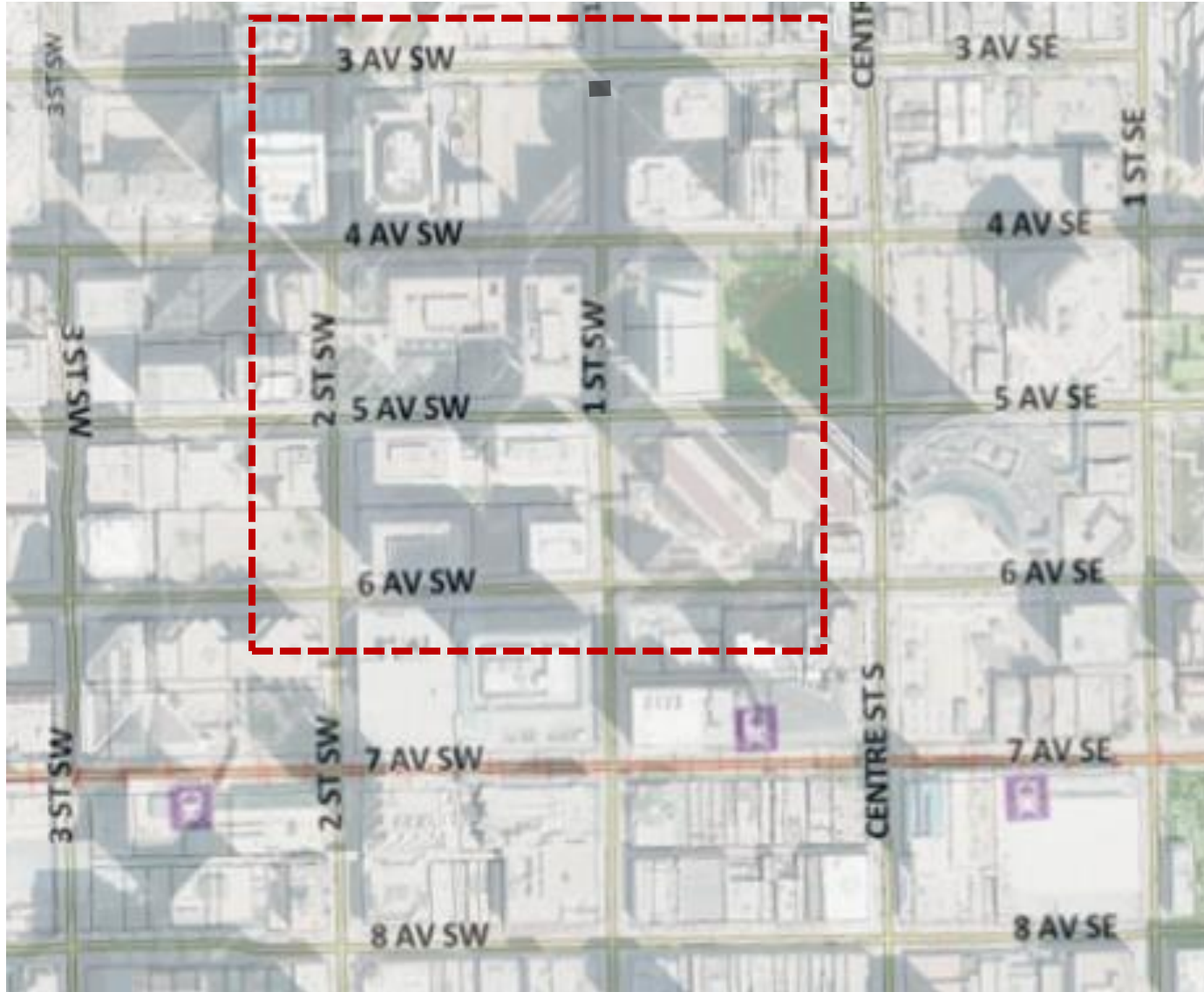
Start: January 30, 2023

Completion: Late February

Legend

-  Impacted Area
-  Active Construction
-  Upcoming Construction





6. ENMAX Manhole

Station Area: 7 Avenue

Location: 1 Street S.W. south of 3 Avenue




Manhole work
3 lanes closure on 1 Street and southernmost lane on 3 Avenue

Status: Active

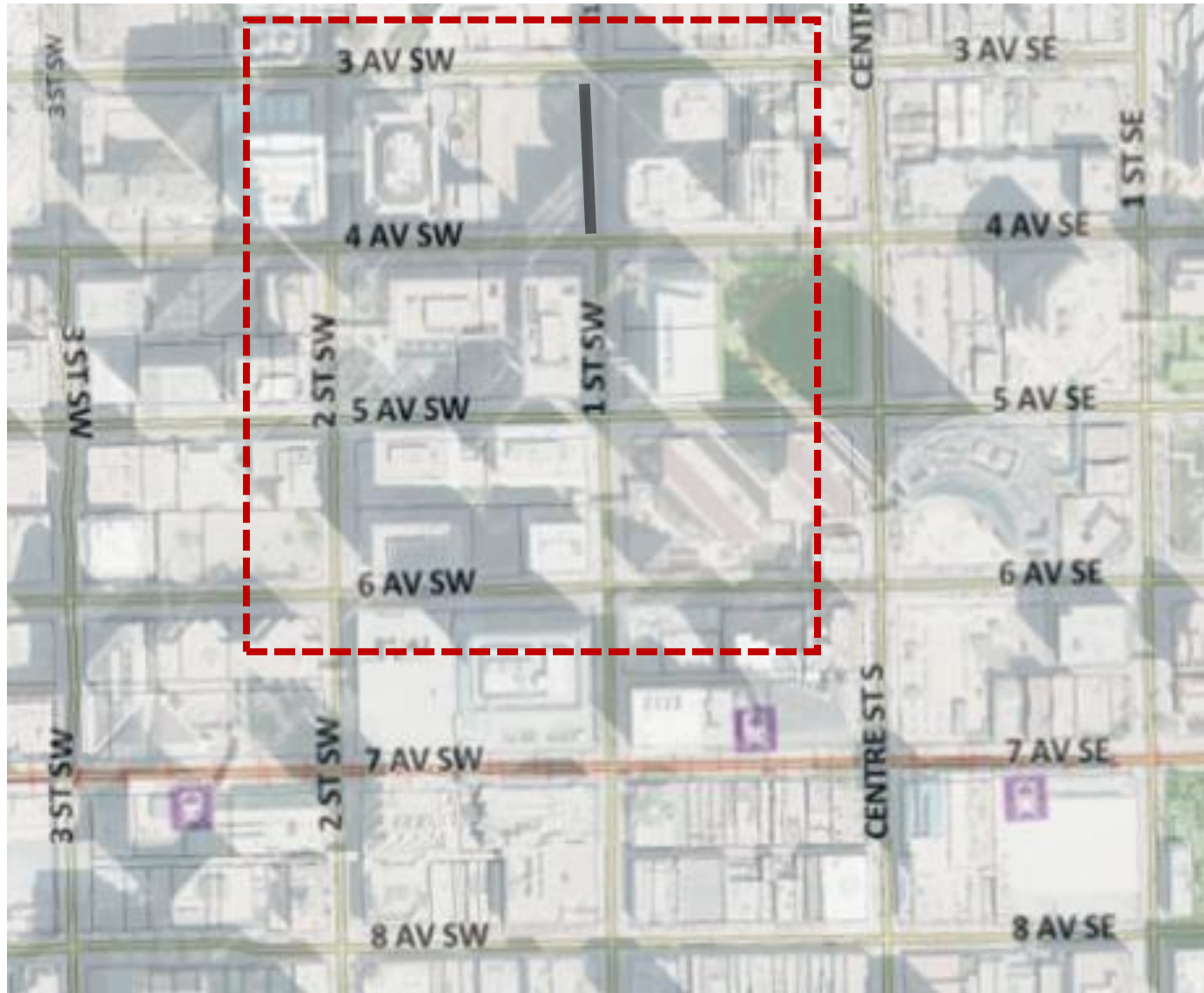
Start: February 7, 2023

Completion: Mid February

Legend

-  Impacted Area
-  Active Construction
-  Upcoming Construction





7. ENMAX Duct Bank

Station Area: 2 Avenue

Location: 1 Street S.W. between 3 Avenue and 4 Avenue.




Duct Bank Installation

Status: Active

Start: February 17, 2023

Completion: Late March

Legend

-  Impacted Area
-  Active Construction
-  Upcoming Construction





8. ENMAX Utility Relocation

Station Area: 2 Avenue

Location: 1 Street S.W. at 4 Avenue.

Full intersection affected

Sidewalk requirements will vary

Permanent 2-lane closure


Temporary 3-lane closure between 9 AM and 3 PM


Status: Upcoming


Start: March 17, 2023

Completion: Mid April

Legend

 Impacted Area

 Active Construction

 Upcoming Construction





9. ENMAX Duct Bank

Station Area: 7 Avenue

Location: 1 Street S.W. between 4 Avenue and 5 Avenue.

Duct Bank Installation


Status: Upcoming


Start: March 10, 2023

Completion: Mid April

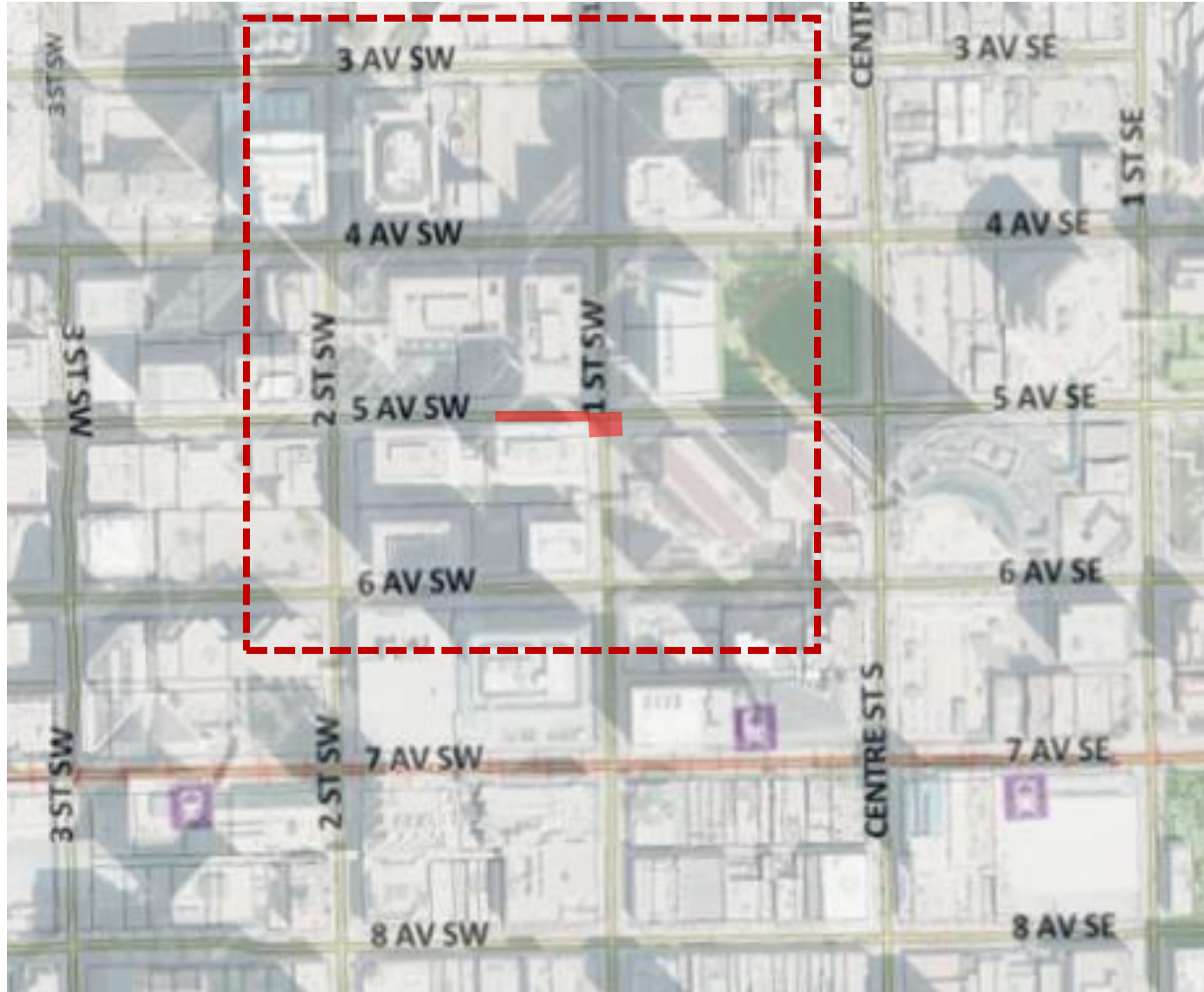
Legend

 Impacted Area

 Active Construction

 Upcoming Construction





10. ENMAX Utility Relocation

Station Area: 2 Avenue

Location: 1 Street S.W. at 5 Avenue.




South half of intersection affected,
Sidewalk requirements will vary
Permanent 2-lane closure
Temporary 3-lane closure between 9
AM and 3 PM

Status: Upcoming

Start: February 21, 2023

Completion: Mid March

Legend

-  Impacted Area
-  Active Construction
-  Upcoming Construction





11. TELUS Utility Relocation

Station Area: 7 Avenue

Location: 6 Avenue S.W. between 1 Street and 2 Street.

Large scale duct bank install on south 2 lanes

Full closure of 2 Street when crossing (1 week)




Tie into existing infrastructure west of 2 Street (2 weeks)

Status: Upcoming

Start: March 13, 2023

Completion: Early May

Legend

-  Impacted Area
-  Active Construction
-  Upcoming Construction

