




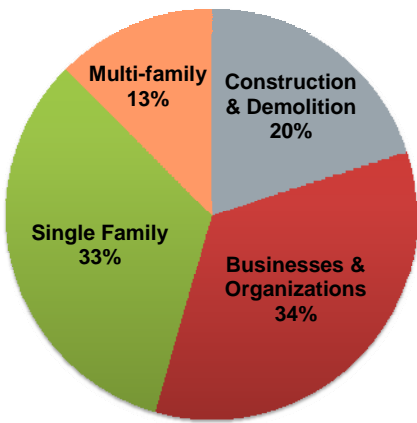
**Welcome**

BOMA Calgary Waste & Recycling Bylaw

Info Session  
January 27, 2016



**Let's talk trash!**



Category	Percentage
Single Family	33%
Businesses & Organizations	34%
Construction & Demolition	20%
Multi-family	13%

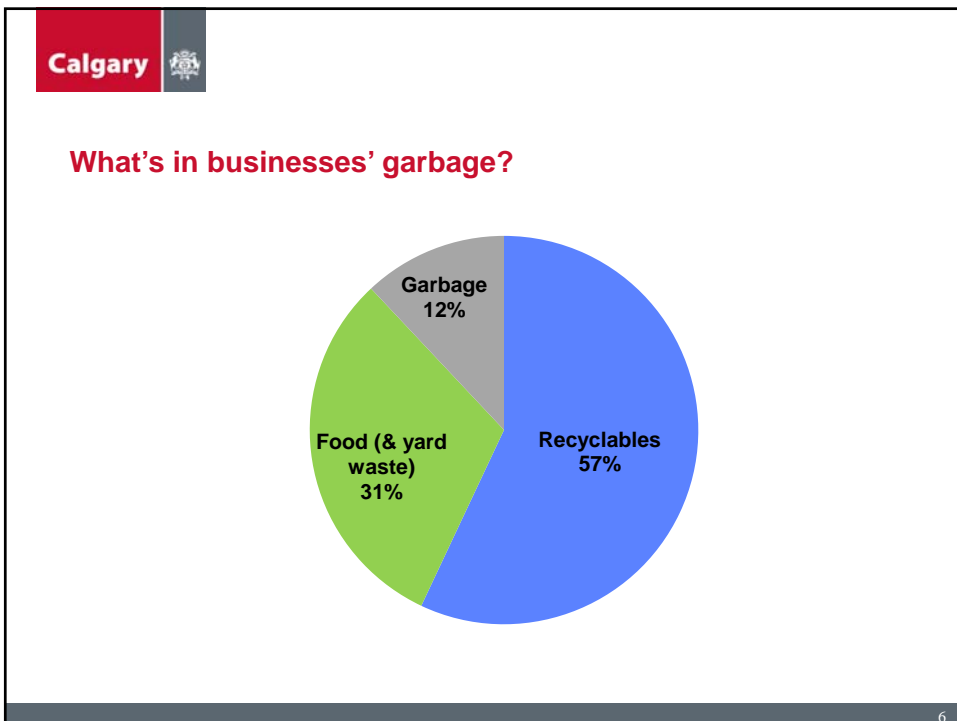
2

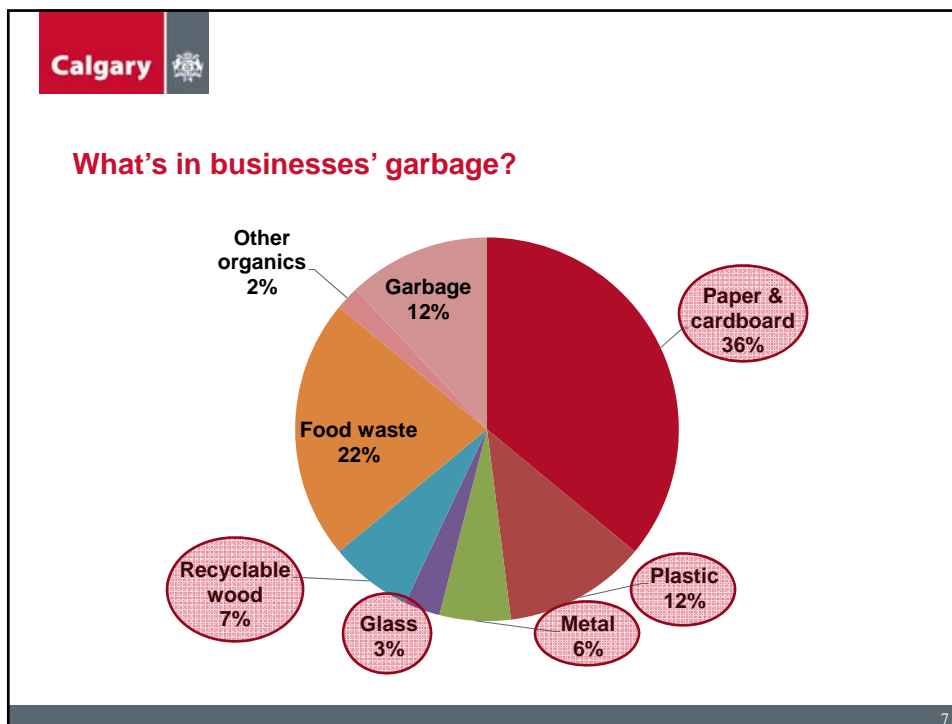
## #1 Myth about Landfills?

3

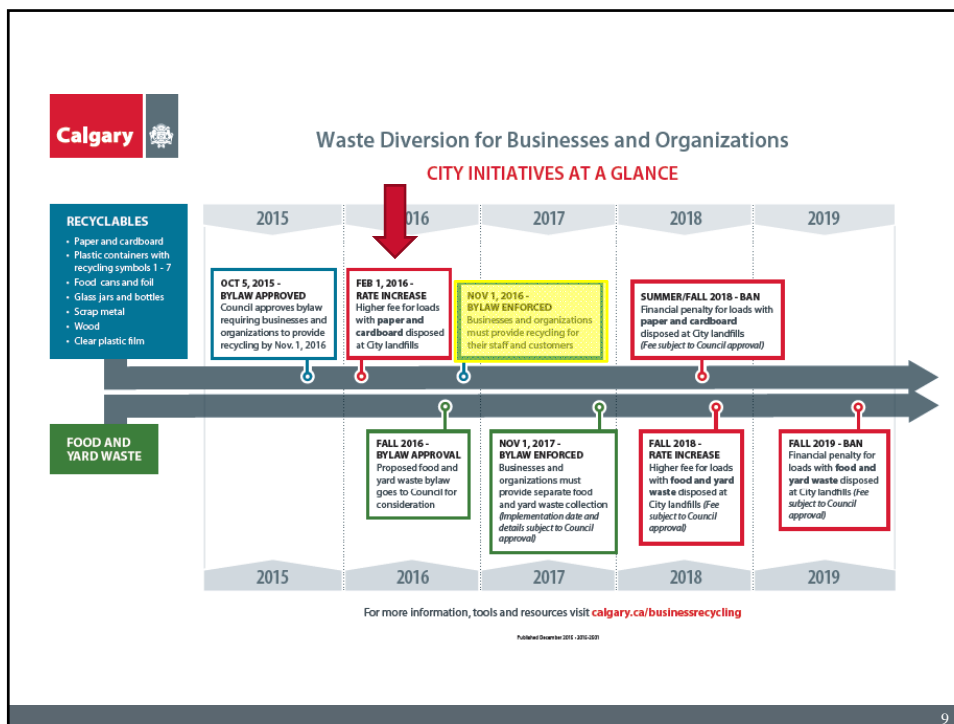


4





- Calgary 
- ### Background
- Engagement with stakeholders starting in 2012
  - May 2014: unanimous Council approval of overall strategy
    - Private sector solution
  - October 2015: unanimous Council approval of bylaw amendment to require business & organizations to recycle certain materials
- 8



**Calgary**

### Key Components of the Bylaw

**“RECYCLING AT NON-RESIDENTIAL PARCELS**

42.5 The owner of a non-residential parcel must ensure that non-residential recyclable material generated on the parcel is:

- (a) collected and stored separate from other waste; and
- (b) taken to and deposited at a material recovery facility.”

## Non-Residential Recyclable Materials





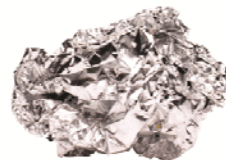




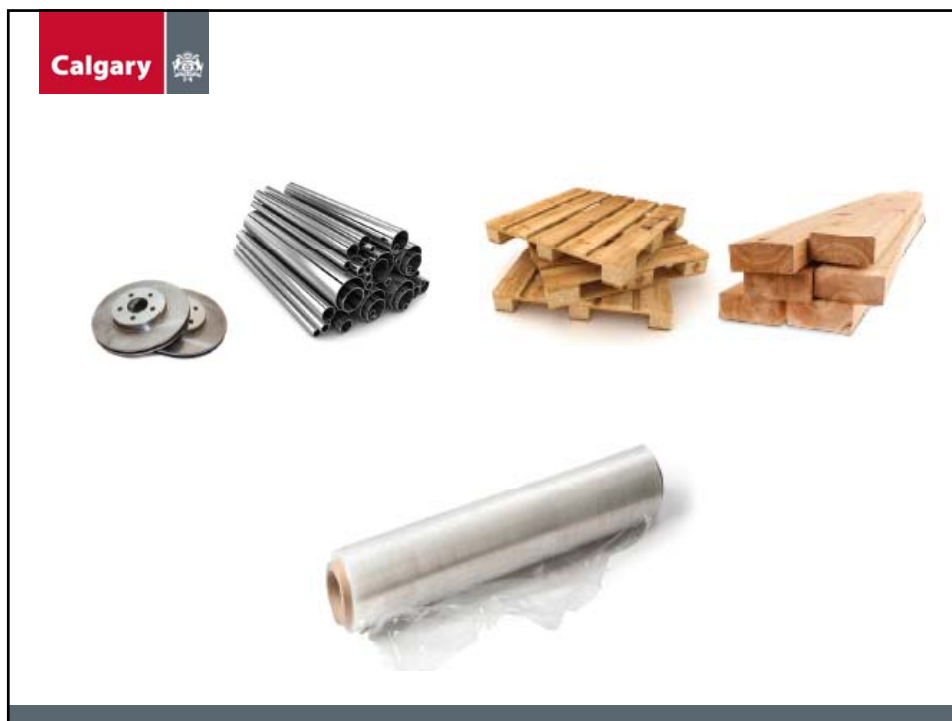
Calgary 



Calgary 







### Key Components of the Bylaw

#### “RECYCLING AT NON-RESIDENTIAL PARCELS

42.5 The owner of a non-residential parcel must ensure that non-residential recyclable material generated on the parcel is:

- (a) collected and stored separate from other waste; and
- (b) taken to and deposited at a material recovery facility.”

Calgary

## Key Components of the Bylaw

The bylaw will not specify:

- How the material is collected or stored
- How often the material is collected

23

Calgary

## Hiring a Hauler

- Greencalgary.org
- Questions to ask

**Recycler Directory**

It's not always easy to find the right hauler to take away your recycling and waste. Whether you are an office, business, school, hospital, hotel, condo, or any public space, you have to do a bit of homework. And we've tried to make it easier by helping you choose a collection service that fits your needs.

The recyclers you see below all provide regular collection of the materials indicated and most of them will serve both businesses and multi-residential properties such as condo or apartment complexes. When trying to find the right recycler for your building, first consider the kinds of materials you will need picked up on a regular basis. You can filter by those materials to find the recyclers you want to call and learn whether they are right for you:


**MF** - Indicates regular collection service for Multi-Family buildings (condos, apartments, etc.)  
**IC** - Indicates regular collection service for the Industrial, Commercial, Institutional sector (businesses, manufacturers, schools, etc.)  
**CD** - Indicates regular collection service for the Construction & Demolition sector.

If you need a bit of help determining what kind of service you might need, give us a call 403.230.1443, ext. 227 or email [Tracy](mailto:Tracy).

**Filters:**

<input type="checkbox"/> Beverage Containers	<input type="checkbox"/> Organics	<input type="checkbox"/> Paper & Cardboard	<input type="checkbox"/> Plastics	<input type="checkbox"/> Tin Cans/Foil
<input type="checkbox"/> Appliances	<input type="checkbox"/> Batteries	<input type="checkbox"/> Electronics	<input type="checkbox"/> Fluorescent Tubes	<input type="checkbox"/> Call for Other Items
<input type="checkbox"/> Pallets	<input type="checkbox"/> Tires	<input type="checkbox"/> Tires	<input type="checkbox"/> Glass Jars/Bottles	


24

**Calgary** 

**Cost**

- Reduce!
- Get paid for your recyclables
- Recycle more materials
- ↑ Recycling, ↓ Waste
- Right sizing
- Program details

25

**Calgary** 


**Calgary.ca/businessrecycling**

Q What are you looking for?

**Businesses & Organizations Recycling Guide**

**PAPER & CARDBOARD**

**Yes** Items that can go in the recycling bin



Check out our in 'am.

Side for Build into a successf...

Side will walk...

ycling progr...  
ess or organiz...

figure out the  
anization, you

organizations!

Get your kit today! To borrow a waste audit kit for your business or organization, fill out the request below or call 311.

26

**Reasons to set up your recycling program now:**

- Give yourself time to select an option that works best for your portfolio
- Avoid extra charges at the landfill from loads containing paper and cardboard
- Don't rush the contract negotiations
- Ensure you meet the November 2016 deadline

27

**Enforcement**

- Businesses & organizations have until Nov. 2016
- Enforcement will be complaint based
- Education-first approach

28



**More Resources**

- [www.calgary.ca/businessrecycling](http://www.calgary.ca/businessrecycling)
- Call 311